



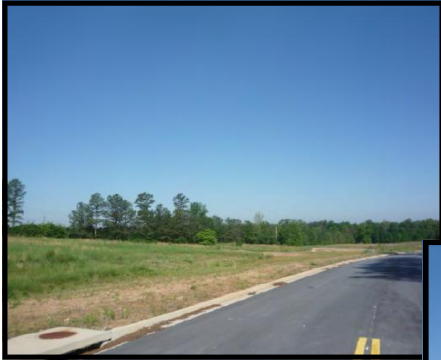
BANK—OWNED PROPERTY AVAILABLE IN WALTON CO, GA

49

5949 HWY 20—LOGANVILLE, GA

(11) INDUSTRIAL LOTS—WEST WALTON BUSINESS PARK

1—4 +/- ACRE LOTS



PROPERTY DESCRIPTION

- Zoned B-3 Business Commercial
- Lots 1-11
- Legal description: LL 248, 4th Dist

LOCATION

- Approximately 1 mile northeast of Centerville Rosebud Road. Bailey Circle is located across Hwy 20 from the site.



Farmers and Merchants Bank

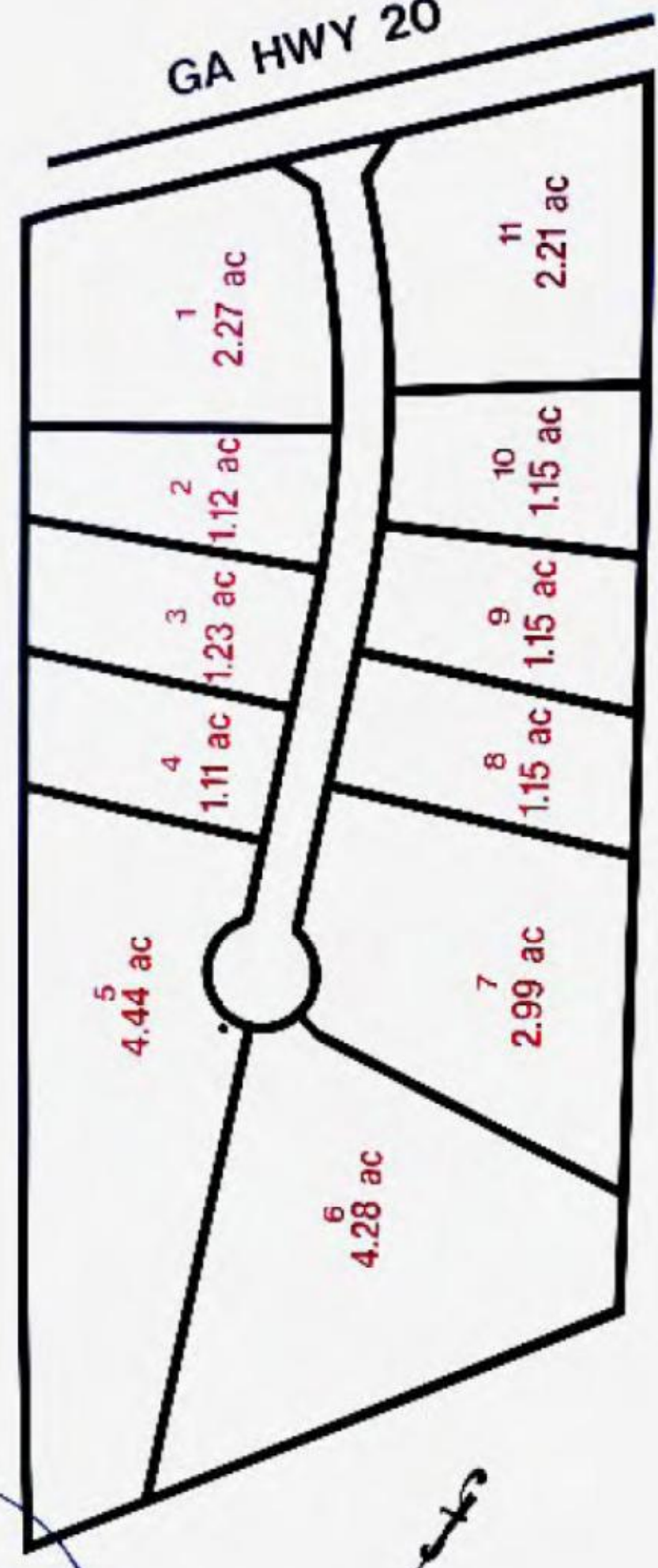
CONTACT KEVIN SHOTT

Phone: 770-784-9450

kshott@FMB.net

The information displayed in this advertisement is for informational purposes only. The listing of properties does not constitute an offer by Farmers and Merchants Bank to sell any property. Farmers and Merchants Bank does not warrant or guarantee the availability of any property listed in this advertisement. The information contained in this advertisement is considered to be "as is". Farmers and Merchants Bank may, without notice, change any part of this advertisement at any time, including information contained in this listing, and including terminating the availability. MEMBER FDIC. EQUAL HOUSING LENDER

GA HWY 20



5
4.44 ac

4
1.11 ac

3
1.23 ac

2
1.12 ac

1
2.27 ac

6
4.28 ac

7
2.99 ac

8
1.15 ac

9
1.15 ac

10
1.15 ac

11
2.21 ac